

# The WELLES Long Chandelier

Available Finishes:  
Blackened Steel, White Steel, Satin Brass, Satin Copper, Satin Nickel



As shown:  
Exterior Finish: Blackened Steel / Interior Finish: Satin Brass  
Light Source: 15 watt incandescent bulb per unit // UL listed

Dimensions: 56" x 18" x 18" H + drop

GABRIEL SCOTT  
EST. 2012  


—  
triode<sup>3</sup> design  
—

28, rue Jacob 75006 Paris  
+33 (0)1 43 29 40 05

—  
contact@triodedesign.com  
www.triodedesign.com



**WELLES Long Chandelier**

Exterior Finish: Matte White / Interior Finish: Satin Copper  
Light Source: 15 watt incandescent bulb per unit // UL listed

Dimensions: 120" x 18" x 24" H +drop

Also Shown:  
**Custom DEAN Oval Dining Table**



GABRIEL SCOTT

EST. 2012



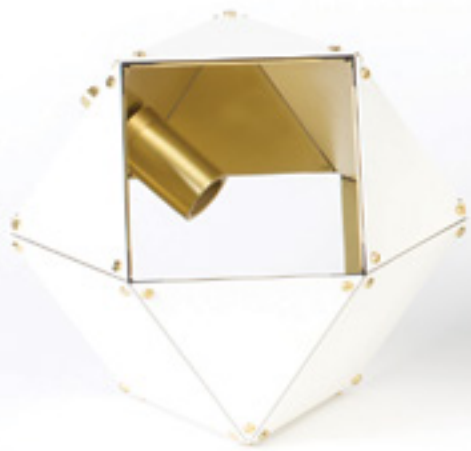
**WELLES Long Chandelier**

As shown:  
Exterior Finish: Matte White / Interior Finish: Satin Copper  
Light Source: 15 watt incandescent bulb per unit // UL listed  
Dimensions: 96" x 18" x 18" H +drop



# The WELLES Series

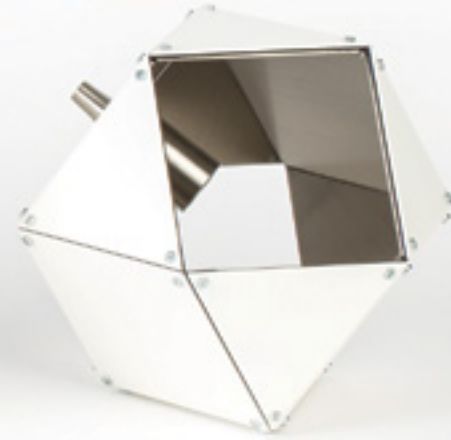
Available Finishes:  
Blackened Steel, White Steel, Satin Brass, Satin Copper, Satin Nickel



White/Satin-Brass



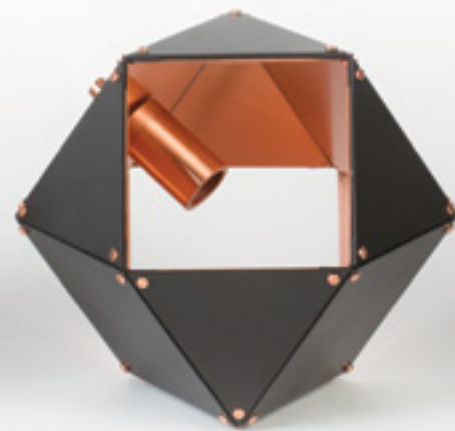
White/Satin-Copper



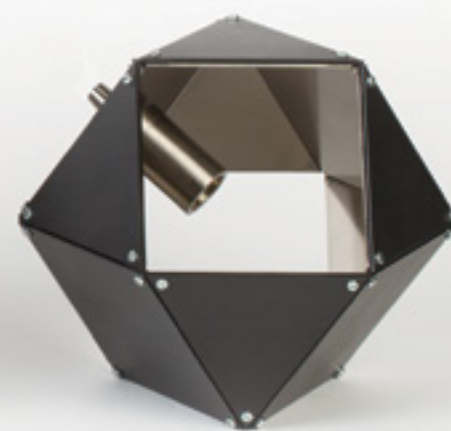
White/Satin-Nickel



Black/Satin-Brass



Black/Satin-Copper



Black/Satin-Nickel



## GO CUSTOM!

Custom Sizes & Configurations Available.

Made up of a series of interconnected geometric shapes, The WELLES is a modular and customizable light-system that form a sculptural and organic shape in all its various configurations and dimensions.

From long branches to large clusters, the nature of this metallic light-fixture allows for infinite silhouette options.

The WELLES is UL listed.  
LED options available.

triode<sup>3</sup> design

28, rue Jacob 75006 Paris  
+33 (0)1 43 29 40 05

contact@triodedesign.com  
www.triodedesign.com