

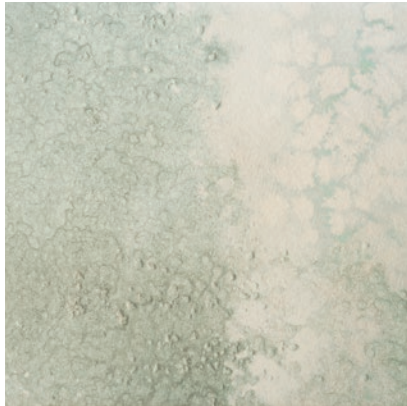
Calico

OCEANIA

Tear Sheet



Oceania is inspired by the depth and mystery of the ocean.



COVE



FJORD



SHOAL



VENUS

Oceania

Colorways: Cove, Fjord, Shoal, Venus

Specifications | Commercial Substrate

Suitable for residential and commercial projects

DETAILS

Printed in panels to fit your specific space

Printed to order

Pricing available upon request

Sold by the square foot

Lead time averages 8 weeks

Rush options and custom colors available

Printed in USA

SPECS

Type II commercial-grade vinyl substrate

Polyester/cotton woven backing

Non-repeating mural

Panels trim to 52" wide, including overlap

20 oz per linear yard (567 g per linear meter)

Dappled surface texture

INSTALLATION

Professional install recommended

Wallpaper comes untrimmed

TESTING

(US) ASTM E 84 class A fire rating

(EU) EN 15102 class B, s2

(CN) CAN/ULC-S102.2

CCC-W-408D type II

WA specification W-101 type II

NFPA 286 corner burn test class A

Passes ASTM G21 mold & mildew

ENVIRONMENTAL

Low VOC per California CHPS 01350 air quality

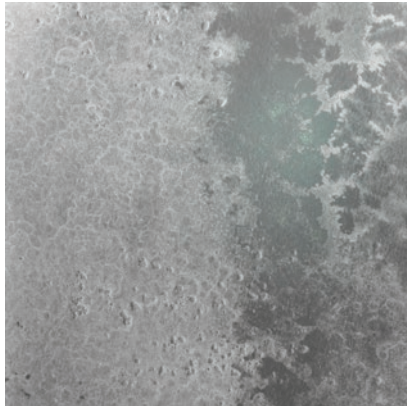
Cadmium and lead free formulation

LEED credits eligible

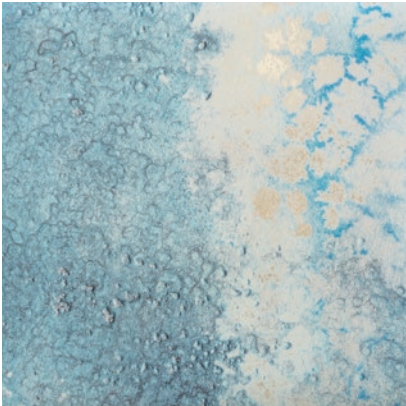
CARE

Clean with damp cloth

Oceania is inspired by the depth and mystery of the ocean.



FATHOM



SIREN

Oceania

Colorways: Fathom, Siren

Specifications | Commercial Substrate

Suitable for residential and commercial projects

DETAILS

Printed in panels to fit your specific space

Printed to order

Pricing available upon request

Sold by the square foot

Lead time averages 8 weeks

Rush options and custom colors available

Printed in USA

SPECS

Type II commercial-grade vinyl substrate

Non-woven backing

Non-repeating mural

Panels trim to 52" wide, including overlap

20 oz per linear yard (620 g per linear meter)

Smooth metallic surface with reflective sheen

INSTALLATION

Professional install recommended

Wallpaper comes untrimmed

TESTING

(US) ASTM E 84 class A fire rating

(EU) EN 15102 class B, s2

(CN) CAN/ULC-S102.2 class A

CCC-W-408D type II

WA specification W-101 type II

NFPA 286 corner burn test class A

Passes ASTM G21 mold & mildew

ENVIRONMENTAL

Low VOC per California CHPS 01350 air quality

Cadmium and lead free formulation

LEED credits eligible

CARE

Clean with damp cloth