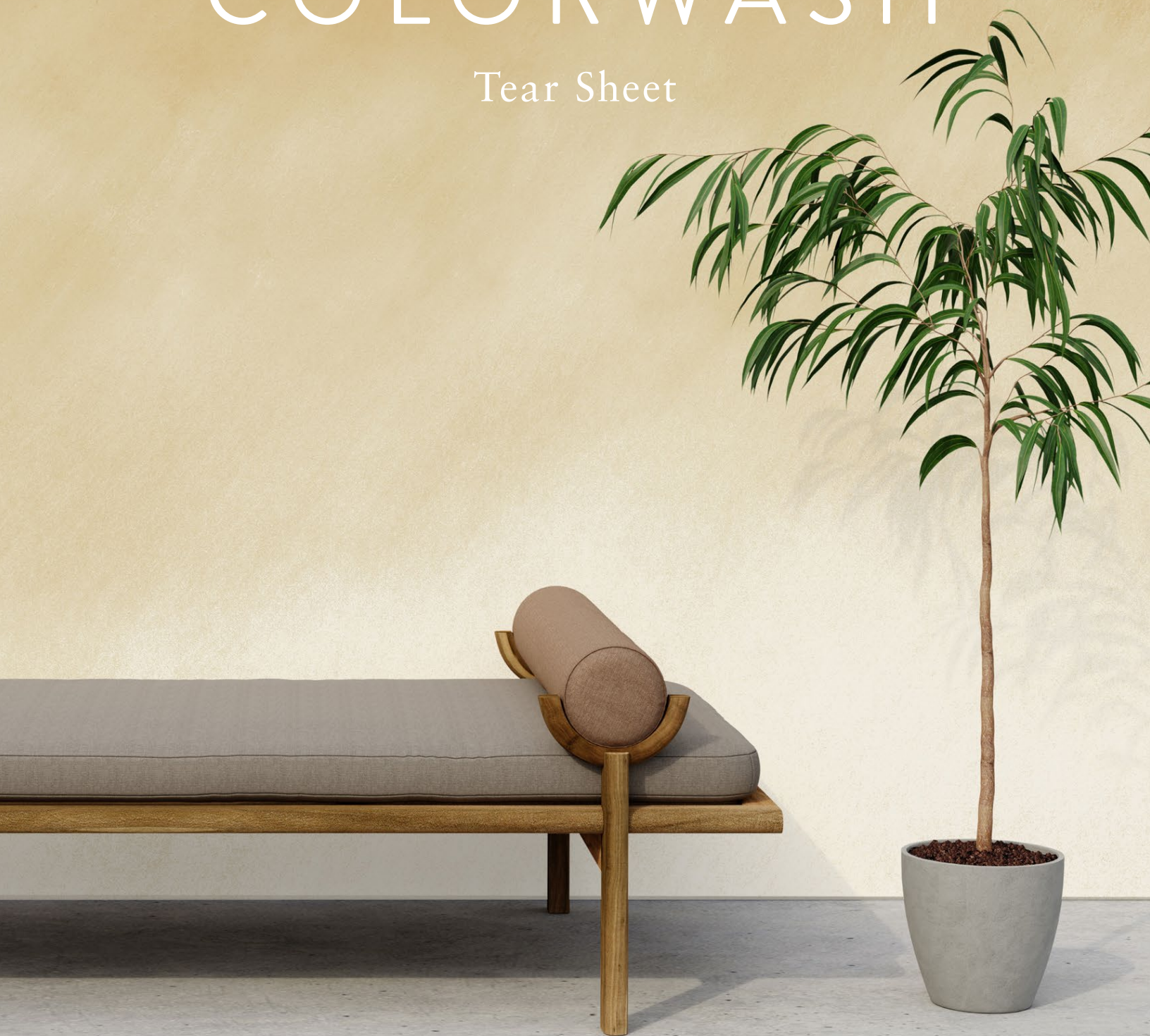


**Calico**

# COLORWASH

Tear Sheet



Colorwash is a suspension of light and color.



ARISE



ASCEND



DIFFUSE



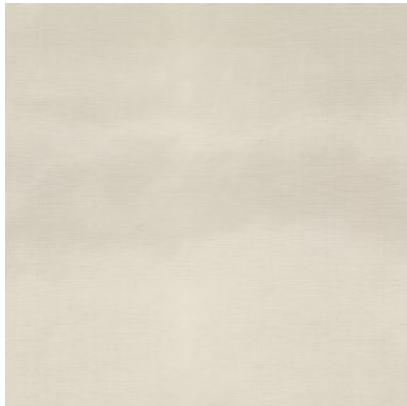
EVANESCE



EVOLVE



TRANSCEND



VANISH



WISP

# Colorwash

## Specifications | Commercial Substrate

Suitable for residential and commercial projects

---

### DETAILS

Printed in panels to fit your specific space  
Printed to order  
Pricing available upon request  
Sold by the square foot  
Lead time averages 8 weeks  
Rush options and custom colors available  
Printed in USA

---

### SPECS

Type II commercial-grade olefin composite substrate  
Polyester/cotton woven backing  
Non-repeating mural  
Panels trim to 52" wide, including overlap  
20 oz per linear yard (452 g per square meter)  
Woven surface texture

---

### INSTALLATION

Professional install recommended  
Wallpaper comes untrimmed

### TESTING

(US) ASTM E 84 class A fire rating  
(EU) EN 15102 class B, s1  
(CN) CAN/ULC-S102.2  
CCC-W-408D type II  
WA specification W-101 type II  
NFPA 286 corner burn test class A

---

### ENVIRONMENTAL

Low VOC per California CHPS 01350 air quality  
Formaldehyde and heavy metal free  
LEED credits eligible  
PVC free

---

### CARE

Clean with damp cloth

triode