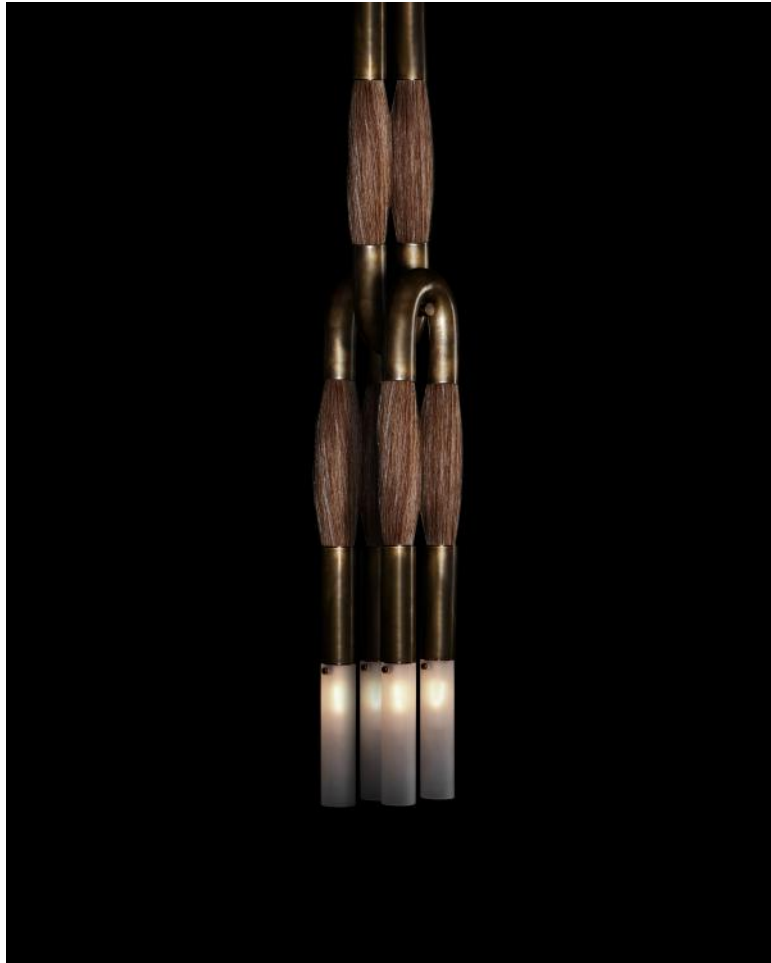


A P P A R A T U S



AGED BRASS / FLAXEN HORSEHAIR

HORSEHAIR : 4 PENDANT

REFERENCE

THE SENSUAL VERSUS THE MACHINE MADE
HORSES BY STEVEN KLEIN
RIDING TACK

COMPOSITION

WEFTS OF HORSEHAIR IMPLY STRUCTURAL FUNCTION
BRASS FORM CAST TO APPEAR DRAPED OVER A PEG

A P P A R A T U S



AGED BRASS / FLAXEN HORSEHAIR

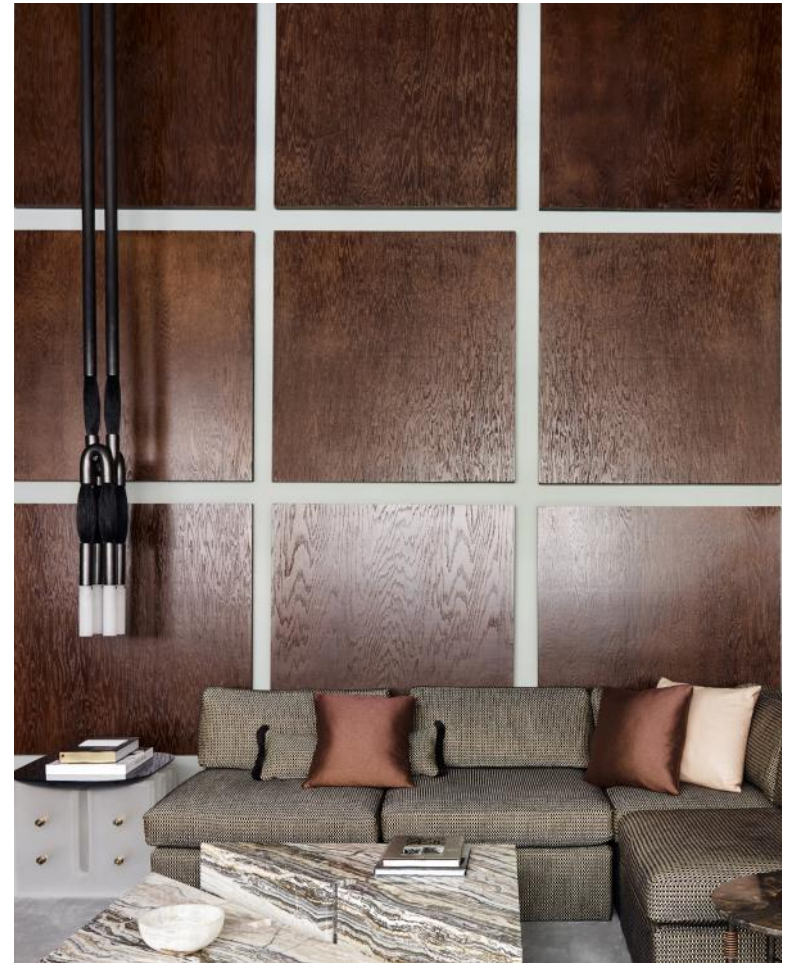


AGED BRASS / FLAXEN HORSEHAIR

A P P A R A T U S



TARNISHED SILVER / PALOMINO HORSEHAIR



BLACKENED BRASS / JET BLACK HORSEHAIR

A P P A R A T U S

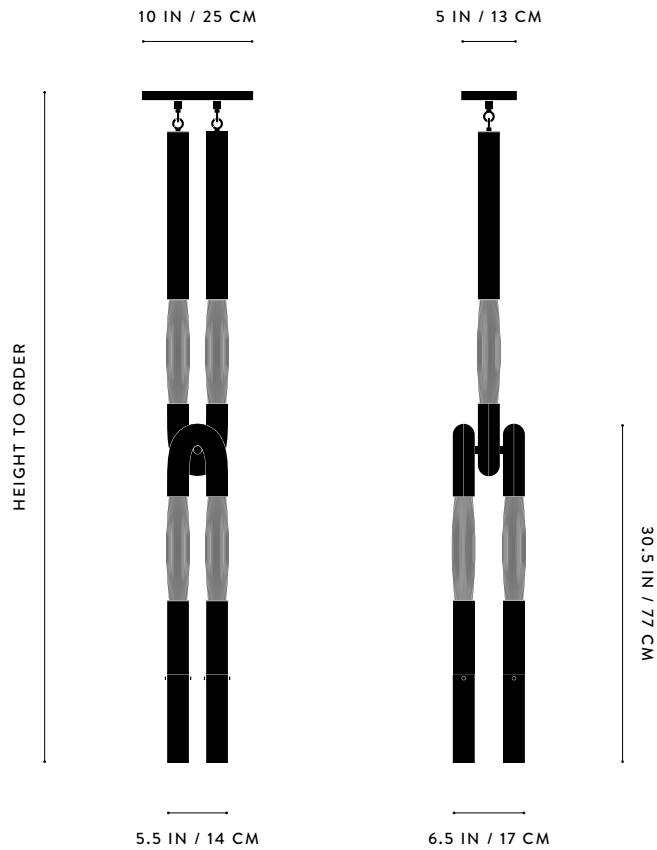


TARNISHED SILVER / FLAXEN HORSEHAIR



TARNISHED SILVER / FLAXEN HORSEHAIR

A P P A R A T U S



OVERALL HEIGHTS OF 106 IN AND ABOVE WILL HAVE
MULTIPLE DROP STEM SECTIONS

HORSEHAIR : 4 PENDANT

DIMENSIONS	5.5 W, 6.5 D IN 14 W, 17 D CM HEIGHT TO ORDER
WEIGHT	APPROX. 25 LBS / 12 KG
PRICE	FROM \$16000 PALOMINO OR JET BLACK FROM \$18000 FLAXEN OR SILVER
MINIMUM HEIGHT INCLUDES	52 IN
ADD HEIGHT	85 IN
	\$30 / IN
VOLTAGE	120-240 UL / CE
LAMPING BULB INCLUDED	MAX 25W 4 X 3W DIMMABLE LED BULB 180 LUMENS EACH 2200K 120V : E12 TOTEM I : TINTED 240V : E14 TOTEM I : TINTED
BULB LIFE	30,000 HOURS
DEPOSIT	50% UPON ORDER
BALANCE	DUE PRIOR TO SHIPPING
LEAD TIME	PLEASE REFER TO WEBSITE

FINISHED AND ASSEMBLED BY HAND IN NY
DOMESTIC AND IMPORTED COMPONENTS

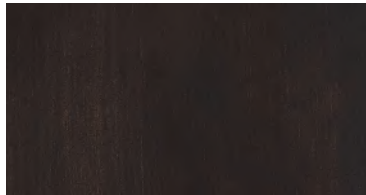
A P P A R A T U S



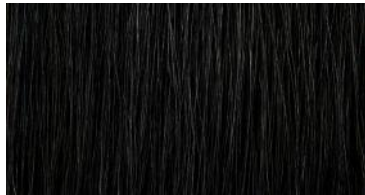
AGED BRASS



HORSEHAIR - PALOMINO



OIL-RUBBED BRONZE



HORSEHAIR - JET BLACK



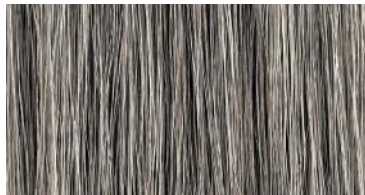
BLACKENED BRASS



HORSEHAIR - FLAXEN



TARNISHED SILVER



HORSEHAIR - SILVER

METAL

HORSEHAIR

HORSEHAIR

AGED BRASS [WAXED]
OIL-RUBBED BRONZE [WAXED]
BLACKENED BRASS [WAXED]
TARNISHED SILVER [LACQUERED] ADD 35%

PALOMINO
JET BLACK
FLAXEN
SILVER