

A P P A R A T U S



AGED BRASS / JET BLACK HORSEHAIR

HORSEHAIR : 1 PENDANT

REFERENCE	THE SENSUAL VERSUS THE MACHINE MADE HORSES BY STEVEN KLEIN RIDING TACK
COMPOSITION	WEFTS OF HORSEHAIR IMPLY STRUCTURAL FUNCTION BRASS FORM CAST TO APPEAR DRAPED OVER A PEG

A P P A R A T U S



AGED BRASS / SILVER HORSEHAIR, AGED BRASS / PALOMINO HORSEHAIR, AGED BRASS / JET BLACK HORSEHAIR, AGED BRASS / FLAXEN HORSEHAIR

A P P A R A T U S



AGED BRASS / PALOMINO HORSEHAIR



AGED BRASS

A P P A R A T U S

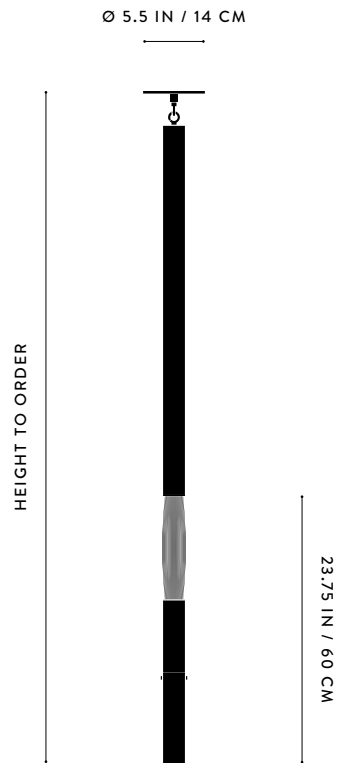


AGED BRASS / FLAXEN HORSEHAIR



AGED BRASS

A P P A R A T U S



OVERALL HEIGHTS OF 88 IN AND ABOVE WILL HAVE
MULTIPLE DROP STEM SECTIONS

HORSEHAIR : 1 PENDANT

DIMENSIONS	Ø 5.5 IN Ø 14 CM
WEIGHT	HEIGHT TO ORDER APPROX. 9 LBS / 4 KG
PRICE	FROM \$4200 PALOMINO OR JET BLACK FROM \$5000 FLAXEN OR SILVER
MINIMUM HEIGHT	34 IN
INCLUDES	85 IN
ADD HEIGHT	\$15 / IN
VOLTAGE	120-240 UL / CE
LAMPING	MAX 25W
BULB INCLUDED	3W DIMMABLE LED BULB 180 LUMENS 2200K 120V : E12 TOTEM I : TINTED 240V : E14 TOTEM I : TINTED
BULB LIFE	30,000 HOURS
DEPOSIT	50% UPON ORDER
BALANCE	DUE PRIOR TO SHIPPING
LEAD TIME	PLEASE REFER TO WEBSITE
	FINISHED AND ASSEMBLED BY HAND IN NY DOMESTIC AND IMPORTED COMPONENTS

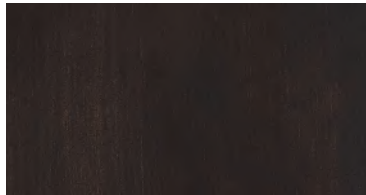
A P P A R A T U S



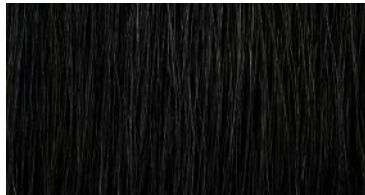
AGED BRASS



HORSEHAIR - PALOMINO



OIL-RUBBED BRONZE



HORSEHAIR - JET BLACK



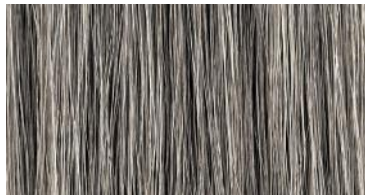
BLACKENED BRASS



HORSEHAIR - FLAXEN



TARNISHED SILVER



HORSEHAIR - SILVER

METAL

HORSEHAIR

HORSEHAIR

AGED BRASS [WAXED]
OIL-RUBBED BRONZE [WAXED]
BLACKENED BRASS [WAXED]
TARNISHED SILVER [LACQUERED] ADD 35%

PALOMINO
JET BLACK
FLAXEN
SILVER